

**HYUNDAI En-Tech**  
MARINE DIESEL ENGINE

## HD403-Series

Model		Unit	HD403	HD403T	HD403TA	HD403TA2
ENGINE TYPE			4 CYCLE, VERTICAL, FRESH WATER COOLED DIESEL ENGINE			
POWER RATING	Heavy Duty	PS/RPM	70/2700	100/2700	120/2700	140/2800
	Midium Duty		80/2800	110/2800	130/2800	150/2900
	Light Duty		90/2900	120/2900	150/2900	170/3000
NO of CYLINDERS			4 in LINE			
BORE x STROKE		mm	104 X 105	100 X 105	100 X 105	104 X 115
DISPLACEMENT		cc	3,568	3,298	3,298	3.907
ASPIRATION			NA	TC	TC&A	TC&A
COMBUSTION SYSTEM			DIRECT INJECTION			
COMPRESION RATIO			18	16	16	16.5
FIRING ORDER			1-3-4-2			
VALVE CLEARANCE		mm	IN 0.4, EXH 0.4			
FUEL OIL			DIESEL LIGHT OIL			
LUBE OIL			API CD CLASS			
COOLING SYSTEM			HEAT EXCHANGER TYPE FORCED CIRCULATING BY CENTRIFUGAL PUMP			
STARTING SYSTEM			DC 24V ELECTRIC STARTING			
FUEL INJECTION PUMP			BOSCH TYPE WITH ALL SPEED CONTROL GOVERNOR			
ROTATING DIRECTION			CLOCK WISE VIEWED FROM BOW			
STANDARD REDUCTION RATIO (OPTIONAL)			1.64, 2.07, 2.52, 2.96, 3.32 (2.06, 2.45, 3.12, 3.46)			
DRY WEIGHT		Kg	350	360	380	420

### SPECIAL RATING:

#### HIGH POWER:

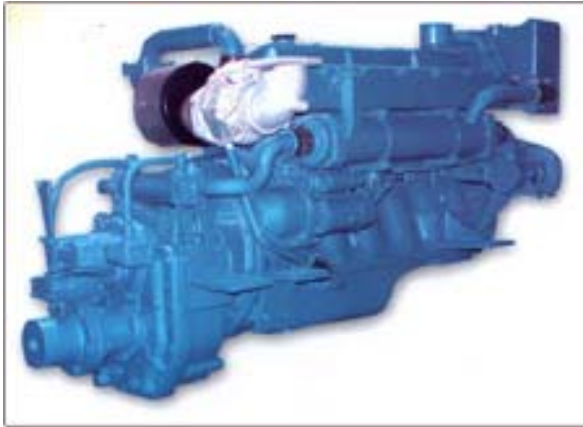
THE TYPES OF THE ENGINE LISTED BELOW ARE RATED FOR HIGHER POWER DEMAND.

- Type HD 403L : 90PS(66KW) / 2700RPM
- Type HD 403LT : 130PS(96KW) / 2800RPM
- Type HD 403LTA : 170PS(125KW) / 3000RPM

#### LOW FUEL CONSUMPTION:

THE TYPES BELOW IS FOR SPECIAL ADJUSTED POWER FOR LOW FUEL CONSUMPTION

- Type HD403L-LC25 : Max power 25PS/1900RPM
- Type HD403LT-LC40 : Max power 40PS/2000RPM
- Type HD403LTA-LC65 : Max power 65PS/2300RPM
- Type HD403LTA-LC105 : Max power 105PS/2500RPM



**HYUNDAI En-Tech**  
MARINE DIESEL ENGINE

## HD607 Series

Model		Unit	HD607	HD607T	HD607TA
ENGINE TYPE			4 CYCLE, VERTICAL, FRESH WATER COOLED DIESEL ENGINE		
POWER RATING	Heavy Duty	PS/RPM	140/2200	175/2150	210/2200
	Midium Duty		150/2300	190/2300	220/2300
	Light Duty		160/2500	210/2500	250/2500
NO of CYLINDERS			6 in LINE		
BORE x STROKE		mm	118 X 115	118 X 115	118 X 115
DISPLACEMENT		cc	7,545	7,545	7,545
ASPIRATION			NA	TC	TC&A
COMBUSTION SYSTEM			DIRECT INJECTION		
COMPRESION RATIO			17.5	16	16
FIRING ORDER			1-5-3-6-2-4		
VALVE CLEARANCE		mm	IN 0.4, EXH 0.4		
FUEL OIL			DIESEL LIGHT OIL		
LUBE OIL			API CD CLASS		
COOLING SYSTEM			HEAT EXCHANGER TYPE FORCED CIRCULATING BY CENTRIFUGAL PUMP		
STARTING SYSTEM			DC 24V ELECTRIC STARTING		
FUEL INJECTION PUMP			BOSCH TYPE WITH ALL SPEED CONTROL GOVERNOR		
ROTATING DIRECTION			CLOCK WISE VIEWED FROM BOW		
STANDARD REDUCTION RATIO			1.61, 2.06, 2.45, 2.82, 3.12, 3.46		
DRY WEIGHT		Kg	660	680	710

### SPECIAL RATING:

#### HIGH POWER:

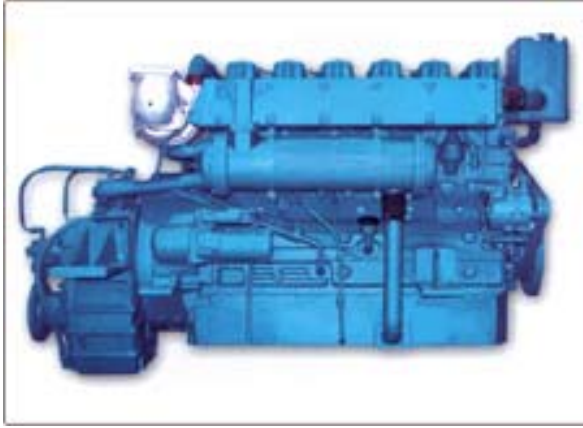
THE TYPES OF THE ENGINE LISTED BELOW ARE RATED FOR HIGHER POWER DEMAND.

- Type HD 607L : 180PS(132KW) / 2400RPM
- Type HD 607LT : 240PS(177KW) / 2500RPM
- Type HD 607LTA : 300PS(220KW) / 2500RPM

#### LOW FUEL CONSUMPTION:

THE TYPES BELOW IS FOR SPECIAL ADJUSTED POWER FOR LOW FUEL CONSUMPTION

- Type HD607L-LC40 : Max power 40PS/1900RPM
- Type HD607L-LC40 : Max power 65PS/2000RPM
- Type HD607LT-LC50 : Max power 50PS/2000RPM
- Type HD607LT-LC80 : Max power 80PS/2100RPM
- Type HD607LTA-LC65 : Max power 65PS/2000RPM
- Type HD607LTA-LC100 : Max power 100PS/2100RPM



**HYUNDAI En-Tech**  
MARINE DIESEL ENGINE

## HD611Series

Model		Unit	HD611	HD611T	HD611TA
ENGINE TYPE			4 CYCLE, VERTICAL, FRESH WATER COOLED DIESEL ENGINE		
POWER RATING	Heavy Duty	PS/RPM	210/2000	280/2000	360/2000
	Midium Duty		230/2100	300/2100	380/2100
	Light Duty		240/2200	310/2200	390/2200
NO of CYLINDERS			6 in LINE		
BORE x STROKE	mm		130 X 140	130 X 140	130 X 140
DISPLACEMENT	cc		11,149	11,149	11,149
ASPIRATION			NA	TC	TC&A
COMBUSTION SYSTEM			DIRECT INJECTION		
COMPRESION RATIO			17	16	15.5
FIRING ORDER			1-5-3-6-2-4		
VALVE CLEARANCE	mm		IN 0.4, EXH 0.6		
FUEL OIL			DIESEL LIGHT OIL		
LUBE OIL			API CD CLASS		
COOLING SYSTEM			HEAT EXCHANGER TYPE FORCED CIRCULATING BY CENTRIFUGAL PUMP		
STARTING SYSTEM			DC 24V ELECTRIC STARTING		
FUEL INJECTION PUMP			BOSCH TYPE WITH ALL SPEED CONTROL GOVERNOR		
ROTATING DIRECTION			CLOCK WISE VIEWED FROM BOW		
STANDARD REDUCTION RATIO			2.06, 2.45, 2.82, 3.12, 3.46	2.09, 2.42, 2.82, 3.19(3.81)	1.97, 2.57, 3.08, 3.46(4.04, 4.48)
DRY WEIGHT	Kg		930	960	1,020

### SPECIAL RATING:

#### HIGH POWER:

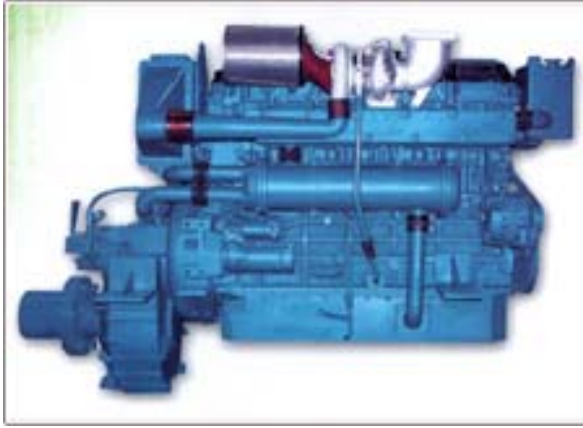
THE TYPES OF THE ENGINE LISTED BELOW ARE RATED FOR HIGHER POWER DEMAND.

- Type HD 611L : 250PS(184KW) / 2100RPM
- Type HD 611LT : 246PS(181KW) / 1900RPM
- Type HD 611LT2 : 350PS(257KW) / 2200RPM
- Type HD 611LTA : 420PS(309KW) / 2200RPM

#### LOW FUEL CONSUMPTION:

THE TYPES BELOW IS FOR SPECIAL ADJUSTED POWER FOR LOW FUEL CONSUMPTION

- Type HD611L-LC100 : Max power 100PS/1800RPM
- Type HD611LT2-LC140 : Max power 140PS/1700RPM
- Type HD611LTA-LC200 : Max power 200PS/1900RPM



## HD613 Series

Model		Unit	HD613TA
ENGINE TYPE			4 CYCLE, VERTICAL, FRESH WATER COOLED DIESEL ENGINE
POWER RATING	Heavy Duty	PS/RPM	430/1800
	Midium Duty		460/1900
	Light Duty		490/2000
NO of CYLINDERS			6 in LINE
BORE x STROKE	mm		133 X 155
DISPLACEMENT	cc		12,920
ASPIRATION			TC&A
COMBUSTION SYSTEM			DIRECT INJECTION
COMPRESION RATIO			17
FIRING ORDER			1-5-3-6-2-4
VALVE CLEARANCE	mm		IN 0.37, EXH 0.5
FUEL OIL			DIESEL LIGHT OIL
LUBE OIL			API CD CLASS
COOLING SYSTEM			HEAT EXCHANGER TYPE FORCED CIRCULATING BY CENTRIFUGAL PUMP
STARTING SYSTEM			DC 24V ELECTRIC STARTING
FUEL INJECTION PUMP			EUI(Electronic Unit Injector) TYPE
ROTATING DIRECTION			CLOCK WISE VIEWED FROM BOW
STANDARD REDUCTION RATIO			2.09, 2.51, 3.08, 3.43(4.04, 4.48)
DRY WEIGHT	Kg		1,250

### **SPECIAL RATING:**

#### **HIGH POWER:**

THE TYPES OF THE ENGINE LISTED BELOW ARE RATED FOR HIGHER POWER DEMAND.

- Type HD 613L : 365PS(268KW) / 1700RPM

#### **LOW FUEL CONSUMPTION:**

THE TYPES BELOW IS FOR SPECIAL ADJUSTED POWER FOR LOW FUEL CONSUMPTION

- Type HD613L-LC240 : Max power 240PS/1400RPM

**All engines supplied with specified list of spare parts.**

## Standard Accessories & Spare parts List (HD611TA)

Item	No.	Description	Specification	Q'ty	Remark
INSTALLATION	01	Instrument Panel		1	
	02	Wiring Harness Extension	7M	1	
	03	Control Lever	NB TWIN	1	
	04	Control Cable	7M	2	
	05	Bilge Pump	DC 24V	1	
	06	Battery	200A	2	
	07	Battery Cable Set		1	
	08	Fuel Hose		2	
	09	Fuel Hose Clamp		6	
	10	Fuel/Water Separator		1	
	11	Silencer set	4"	1	
	12	Flexible joint	4"	1	
	13	Kingstone ass'y	1½"	1	
S/PARTS	01	Fuel Filter		2	
	02	Oil Filter	Full flow & By-pass	2	set
	03	Separator Filter		2	
	04	Impeller	1½"	1	
	05	V-belt Kit	25212-83000	1	set
	06	Working dress		1	
	07	Tool Box & Tools		1	
	08	Wrench Set		1	
	09	Manual		1	